

St. Matthew's School proudly announces a program for 4 and 5 year old preschoolers. Our Enrichment Class is designed to enhance the daily preschool learning experience. These classes will focus on science, literacy and math in a play based environment. Small class sizes will allow for extended one-on-one interactions with the teaching staff.



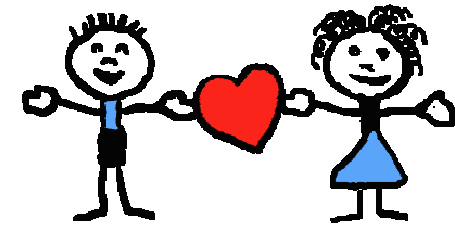
### Sample Day in Enrichment during "How Does Our Garden Grow"

We spend five weeks learning the different parts of plants, what plants need to grow, how they grow and what wonderful things they provide us with. On the sixth and final week we make paint from dirt for our art project, we eat mud for our snack, we learn how to make clay worms and finally we plant a beautiful terrarium to take home and watch Mother Nature at work.

This is just a small example of the fun and wonderful learning opportunities in Preschool Enrichment.

# PRESCHOOL ENRICHMENT CLASS

## 2016-17



St. Matthew's School

610-458-3381

[www.stmatthews-school.org](http://www.stmatthews-school.org)

[selkins@stmatthews-school.org](mailto:selkins@stmatthews-school.org)



## Important Details:

### Times:

Morning sessions meet on Fridays from 9:00 to 11:30.

Afternoon sessions meet on Tuesdays from 12:30 to 3:00.

(\*Due to school closings, some sessions may include days other than Tuesday or Friday.)

### Class Size / Ratio:

All classes will be limited to 12 children with a teacher and assistant.

### Cost:

Each 6 week session is \$110.00.

### School Closings:

If St. Matthew's School is closed for weather related reasons, classes will not be rescheduled.

### Location:

All classes will be held in the second classroom on the left side of the hallway when entering from the playground.

## Themes and Dates:

### **Awesome Art and Artists**

Tuesday PM: 9/13, 9/20, 9/27, 10/4, 10/11, 10/18

Friday AM: 9/16, 9/23, 9/30, 10/7, 10/14, 10/21

### **Dinosaurs on the Loose**

Tuesday PM: 10/25, 11/1, 11/10\*\*, 11/15, 11/29, 12/6 (\*\*11/10 is a Thursday)

Friday AM: 10/28, 11/4, 11/11, 11/18, 12/2, 12/9

### **Laura Numeroff: an Author Study**

Tuesday PM: 1/3, 1/10, 1/17, 1/24, 1/31, 2/7

Friday AM: 1/6, 1/13, 1/20, 1/27, 2/3, 2/10

### **Wonderful and Wacky Weather**

Tuesday PM: 2/21, 2/28, 3/7, 3/14, 3/21, 3/28

Friday AM: 2/24, 3/1\*\*, 3/10 3/17, 3/24, 3/31 (\*\*3/1 is a Wednesday)

### **How Does Our Garden Grow?**

Tuesday PM: 4/4, 4/18, 4/25, 5/2, 5/9, 5/16

Friday AM: 4/7, 4/21, 4/28, 5/5, 5/12, 5/19

## Sign-up Form

### *Sign up for:*

	<i>AM</i>	<i>PM</i>
<input type="checkbox"/> Awesome Art and Artists	_____	_____
<input type="checkbox"/> Dinosaurs on the Loose	_____	_____
<input type="checkbox"/> Numeroff Author Study	_____	_____
<input type="checkbox"/> Wonderful & Wacky Weather	_____	_____
<input type="checkbox"/> How Does our Garden Grow?	_____	_____
<input type="checkbox"/> All Five!	_____	_____

- ✓ Registration is first come, first serve.
- ✓ Families registering prior to July 31 for all 5 sessions will be guaranteed all sessions (space permitting).
- ✓ After July 31, families may register for any number of sessions (space permitting).
- ✓ Pre-enrollment ends on August 31.
- ✓ All registrants after August 31 will be placed into a lottery for any available spaces. The lottery will take place 5 weeks prior to the beginning of each session.
- ✓ No payment is due at this time. An invoice will be emailed to you prior to the beginning of each session.

Child's Name \_\_\_\_\_

Date \_\_\_\_\_

St. Matthew's School  
 2440 Conestoga Road  
 Chester Springs, PA 19425  
 Phone: 610-458-3381  
 E-mail: [selkins@stmatthews-school.org](mailto:selkins@stmatthews-school.org)